

ELECTRIC STRIKE

GK310M 12V



WWW.GUARDALL-LOCKS.COM.AU

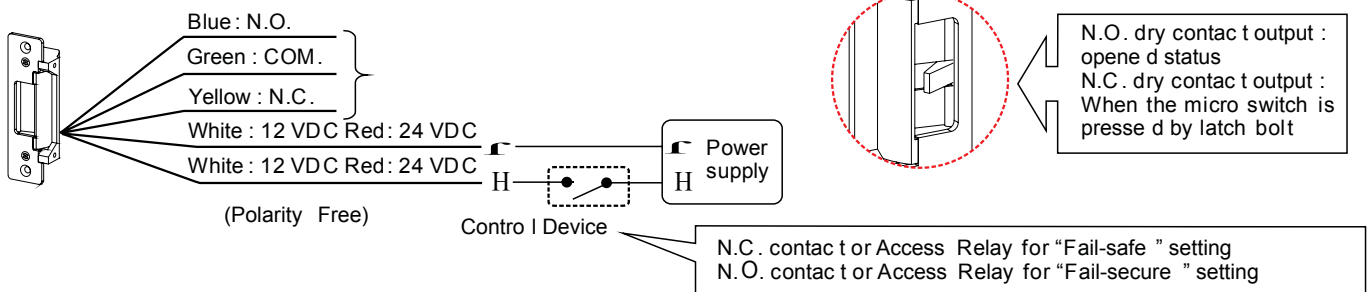


Features

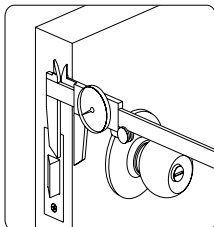
- 12V DC
- Changeable between Fail Safe and Fail Secure
- Accepts 15mm latch throw
- Stainless Steel Face Plate

Specifications

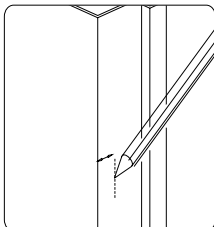
- Operating Voltage 12DC
- Current Draw: 0.25A / 12V: (At Temperature 20°C)
- Operating Temperature: -10°C~45°C
- Humidity: 0~95% non-condensing
- Material: St. Steel Faceplate Zinc Alloy Steel Bodies
- Tested over 1 000 000 cycles.
- Net Weight : 250g



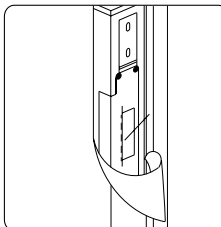
Installation instructions



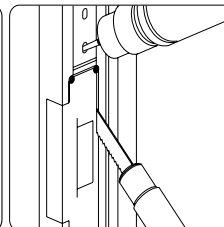
1. Measure the vertical and horizontal position of the latch bolt on the door leaf



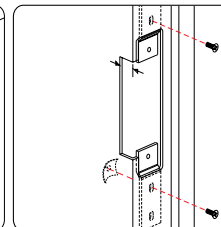
2. Mark the position of the latch bolt on the door frame



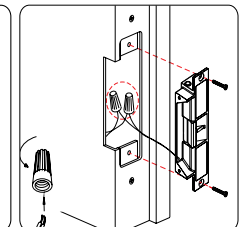
3. Fix the installation template supplied to the marked line



4. Drill the holes and cut the door frame off as indicated by the template



5. Fix the tabs tightly



6. Connect the power and test the strike before finally mounting the unit

Warranty

The product has a limited warranty against defects in material and workmanship while used in normal service for a period of 5 years from the date of sale to the original client. The Guardall policy is one of continual development and improvement, therefore Guardall reserves the right to change specifications without notice